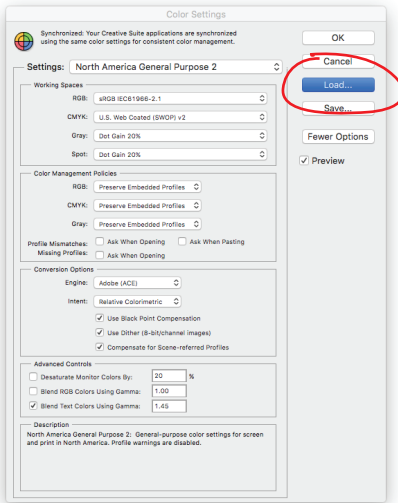
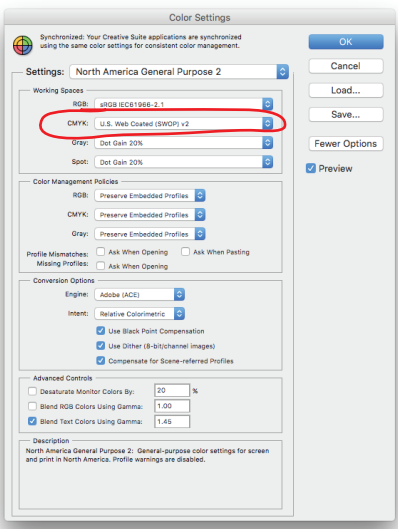


loading .cfs file

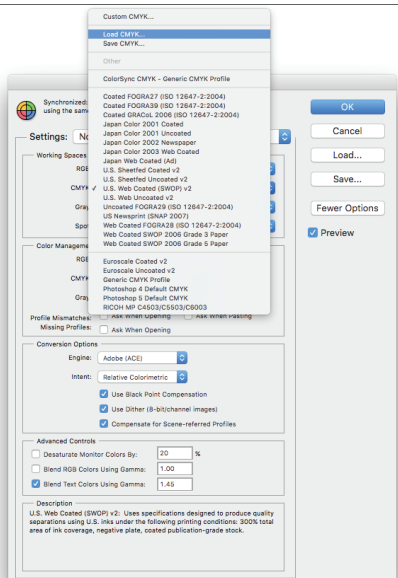


1. From the menu bar, choose edit, color settings.
2. Click the load button to the right and locate the "Rutland_CMYK values.csf" file.
3. Click open and the Rutland MC305 will appear in the CMYK working space. Click OK. Photoshop will use these new values when you convert an image to CMYK.

loading .api file



1. From the menu bar, choose edit, color settings.
2. Click the blue arrows on the CMYK color space window. Click OK.



3. Select "Load CMYK", and locate the "Rutland_CMYK values.csf" file. Click open and the Rutland MC305 will appear in the CMYK working space. Click OK. Photoshop will use these new values when you convert an image to CMYK.