

10007TFX Epic TFX Transclear

Wilflex™ Epic TFX TransClear is a heat-fusible clear that can be used as a first-down printable layer, which acts as the hot split/hot-peel release coating for four-color and spot process inks. Epic TFX TransClear offers wide improvements in print quality and will produce soft, durable transfers with enhanced color and print definition of the graphic.

Highlights

- ▶ Use as a carrier for four-color process inks.
- ▶ Use as a first-down printable layer.
- ▶ Improves print definition of graphic.
- ▶ Produces soft, durable transfers.

Printing Tips

- ▶ Evaluate the hot-split properties when using as a first down print application because different transfer papers can affect the peel properties of the clear.
- ▶ The slight "tack" surface of the clear on the transfer paper following drying will provide an adhesion bond that helps keep fine-line and half-tone dots in position on the paper.
- ▶ Adjustments to the drying mechanism may be required as the variables of different drying (heat) types, length of dryer conveyor and drying units, will affect the overall transfer finish.
- ▶ The majority of standard transfer papers can be used with confidence. If a softer-feel transfer is required, an uncoated transfer paper is recommended. In most cases, a hotsplit/hot-peel transfer paper will be required.

Compliance

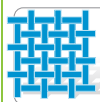
- ▶ Non-phthalate.
- ▶ For individual compliance certifications, please visit www.wilflex.com/compliance.

Precautions

- ▶ Perform fusion tests before production. Failure to cure ink properly may result in poor wash fastness, inferior adhesion and unacceptable durability. Ink gel and cure temperatures should be measured using a Thermoprobe placed directly in the wet ink film and verified on the production run substrate(s) and production equipment. It is the responsibility of the printer to determine that the correct ink has been selected for a specific substrate and the application processes meet your customer's standards or specifications.
- ▶ Pretest all fabrics for desired properties before beginning production printing. / Turn garment inside-out when washing/drying to keep transfer looking its best.
- ▶ Examine the fabric type and color before and after the application of the transfer, as color distortion may occur due to the introduction of heat to sensitive fabric types and dyestuffs inherent in the garment.
- ▶ It is advisable to press the blank shirt under transfer press before applying transfer to reduce moisture in garment.
- ▶ Stir plastisols before printing.
- ▶ Do not dry clean, bleach or iron printed area.
- ▶ **NON-CONTAMINATION OF EPIC INKS:** Do not add or mix non-Epic inks, additives or extenders with Epic inks. All buckets, palette knives, stirring apparatus, squeegees, flood bars and screens must be cleaned properly and free of phthalates and pvc containing inks. Non-phthalate emulsions and pallet adhesives must be used. Failure to follow these precautions may cause phthalate contamination in violation of consumer protection laws and regulations.
- ▶ Any application not referred in this product information bulletin should be pre-tested or consultation sought with Wilflex Technical Services Department prior to printing.
- ▶ Email: techserviceswilflex@polyone.com



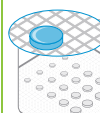
Fabric Types
100% cotton, cotton blends, rayon, linen, and Lycra. NOT recommended for nylon or satin fabrics.



Mesh
Counts: 158-305 t/in (62-120 t/cm)
Tension: 25-35 n/cm²



Squeegee
Durometer: 60-80
Edge: Hard, Square
Stroke: Medium flood, fast speed
**Do not use excess squeegee pressure.*



Non-Phthalate Stencil
Direct: 2 over 2
Capillary/Thick Film: N/A
Off Contact: 1/16" (.2 cm)



Flash & Cure Temperatures
Flash: 160°F (70°C)
Cure: 320°F (160°C)
Transfer: 375°F (190°C)



Pigment Loading
EQ: N/A
MX: N/A
PC: 10% max
**All percentages listed at % by weight.*



Epic Additives
Extender: N/A
Reducer: N/A
**All percentages listed at % by weight.*



Storage
65-90°F (18-32°C)
Avoid direct sunlight.
Use within one year of receipt.



Clean Up
Ink degradant or press wash.



Health & Safety
MSDS: www.polyone.com or
Contact your local CSR.